

The
VIRTUAL MUSEUM
of the
LANCASHIRE & YORKSHIRE RAILWAY

Operational Documents & Pamphlets.

1924

Some Interesting Statistics

Of the

L M S.

(20 Pages).

SOME INTERESTING STATISTICS OF THE L M S



LONDON AND

LEICESTER	1 hr. 47 m.	LEEDS	3 hr. 57 m.
BIRMINGHAM	2 hr. 0 m.	BRADFORD	4 hr. 30 m.
NOTTINGHAM	2 hr. 15 m.	GLASGOW	8 hr. 15 m.
SHEFFIELD	3 hr. 14 m.	EDINBURGH	8 hr. 15 m.
MANCHESTER	3 hr. 30 m.	ABERDEEN	12 hr. 10 m.
LIVERPOOL	3 hr. 40 m.	INVERNESS	14 hr. 5 m.

THE LONDON MIDLAND AND SCOTTISH RAILWAY.

connects London with the Principal Industrial Towns in Great Britain.
Largest owners of Steamships and Hotels amongst British Railways.

THE LONDON MIDLAND AND SCOTTISH RAILWAY

comprises the following lines:—

THE LONDON & NORTH WESTERN,
MIDLAND, LANCASHIRE & YORK-
SHIRE, NORTH STAFFORDSHIRE,
FURNESS, CALEDONIAN, GLASGOW &
SOUTH WESTERN AND HIGHLAND
and twenty-six subsidiary Companies.

**England,
Scotland and
Wales**

Of the 40 counties of England, the L. M. and S. R. penetrates no less than 32. North and South Wales are also directly served by the line, and the whole of Scotland's industrial areas and principal tourist resorts are, with a few slight exceptions, similarly brought into connection with London and the inland centres of population in Great Britain.

Ireland

The L. M. and S. R. provides the principal means of industrial intercourse with Ireland by steamship services from Holyhead, Fleetwood, Liverpool, Heysham and Stranraer.

**Connection
with Western
and Southern
Groups**

The L. M. and S. R. is directly linked with the Great Western and the Southern Railways, so that through services between all parts of the Midlands and the North, and the South and West of England can be maintained.

**Cross-country
Services**

Whilst the main business of the Company is transportation between all parts of the South, the Midlands and the North of Britain, they provide the principal means of communication between the Western and Eastern Counties, as joint owners of railways in Norfolk, Suffolk and Essex.

**Coal, Iron Ore
and other
Mineral Areas**

A reference to any map showing the physiography of the British Isles will demonstrate the favourable situation of the line in regard to the principal coal and iron fields. The Company are the principal carriers of the mineral traffic from the mines of Lancashire, South Yorkshire, Derbyshire, Nottinghamshire, Leicestershire, Warwickshire, Staffordshire, and give direct access to the Forest of Dean and South Wales.

The Great Industrial Towns

The majority of the great industrial and manufacturing towns of Great Britain are directly served by the L M S, who are the largest owners of rolling stock for the carriage of goods and minerals. Some 50 different classes of wagons, suitable for every sort of traffic, including loads of exceptional size and weight, are at the service of the manufacturer and trader.

The Business Man's Route

Their Main Lines are pre-eminently the business man's route between London and the large manufacturing towns in the Midlands and the North. They directly serve the lace, hosiery and leather factories of Leicester, Nottingham and Derby; the iron and steel industries of South Yorkshire; the woollens and yarns of the West Riding towns; the textiles of Lancashire; the potteries of Staffordshire; the hardwares of Birmingham; and the shipping industries of the Mersey and the Clyde. Through London and the other great British seaports, traders are placed in touch with the markets of the world.

Holiday Resorts

Many of the best and most popular holiday resorts are served by the L. M. and S. R.—North and Mid Wales, the Western Coast, Isle of Man, Lake District, Derbyshire, the principal Inland Spas, the North of Ireland, and most of Scotland. The South Coast resorts are also provided for by through services.

Steamship Services

The London Midland and Scottish Company are the largest railway steamship owners in Britain. They provide the direct and principal means of transit between Great Britain and the Sister Isle; and in Scotland have a large fleet of passenger steamers navigating the Clyde. From the port of Goole the Company's vessels sail to France, Denmark, Belgium, Holland and Germany, whilst during the Summer Season there is a Steamship Service between Hull (Riverside Quay) and Zeebrugge Quay, Belgium.

Up-to-date Methods of Transportation

Adopting the most modern methods of transportation the Company is able to schedule its train services for passengers, parcels and freight in such a manner that expeditious transportation may be relied upon.

Largest Railway Hotel Proprietors

The London Midland and Scottish Company is the largest owner of Railway Hotels in the world, controlling some thirty-two establishments, many of which are the most up-to-date examples of Hotel construction and equipment.

A GREAT HERITAGE.

The reputation which the London Midland and Scottish Company inherits for comfortable and expeditious travel, and as the pioneers of the principal improvements which have marked the progress of Railway enterprise in Great Britain in the last fifty years, is jealously guarded as a cherished heritage. It is the earnest aim of the Management to continue this splendid tradition.

ARTHUR WATSON, General Manager.

LONDON MIDLAND AND SCOTTISH RAILWAY



Some Interesting Statistics

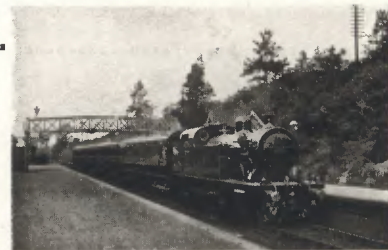


THE HOTEL FOR WHICH MANCHESTER
IS FAMOUS.

Capital issued	£398,929,175
Miles open for Traffic	6,963½
Length of 12 Canals owned Miles	349
Total Number of Employees (approx.)	269,000
Published Railway Traffic Receipts (Six Months):—	
Coaching	£15,120,000
Goods	£24,330,000
	<u>£39,450,000</u>

STATIONS

Passenger	722
Goods	559
Goods and Passenger	1,713
Joint Passenger	43
„ Goods	11
„ Goods and Passenger	120
	————— 3,168



ATTRACTIVE AND WELL-KEPT STATIONS
ARE A FEATURE OF THE L.M.S.



HOW PICNIC PARTIES ARE MADE HAPPY.

PRIVATE SIDINGS 3,926

STEAMSHIP SERVICES

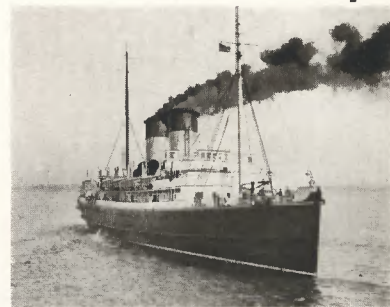
Regular Irish and Continental Steamship Services (daily) 14

Nautical miles run between England and Ireland
 (six months) 200,000 approximate

Nautical miles run between England and the Continent
 (six months) 240,000 ..

STEAMSHIPS OWNED

EAST COAST. Sailing between Goole
 and Hull and Continental Ports .. 21



CHOICE OF THREE ROUTES
 TO BELFAST BY L.M.S.

STEAMSHIPS OWNED

(continued)

WEST COAST. Sailing between England and Ireland:

Holyhead and Kingstown	4
.. .. North Wall, Dublin (Passenger)					2
.. (Cargo)					7

Holyhead and Greenore	4
Fleetwood and Belfast	4
Heysham, Belfast and Douglas	4
Liverpool and Drogheda	2
Stranraer and Larne	2



LUXURIOUS RAILWAY TRAVEL.



A LINK BETWEEN ENGLAND AND ULSTER.

STEAMSHIPS OWNED

(continued)

FIRTH OF CLYDE AND LAKE STEAMERS.

Windermere Lake.. .. .	5
Coniston Lake	2
Loch Tay	3
Loch Awe	1
Loch Lomond (Joint with L. & N.E.R.)	6
Firth of Clyde	12
Tilbury and Gravesend Ferry	5
	—
Total	84
	—



COMFORTABLE NIGHT TRAVEL
BETWEEN ENGLAND AND IRELAND.



HOLYHEAD—THE PRINCIPAL GATEWAY TO IRELAND. THE L M S OPERATE SEVEN ROUTES TO IRELAND.

HOTELS

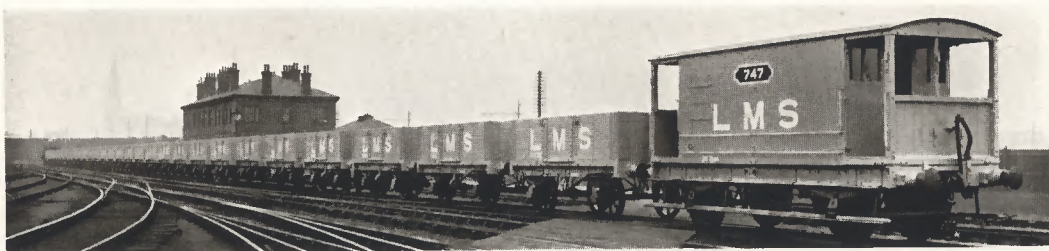
Hotels Owned and Managed by the Company 32

REFRESHMENT ROOMS

Refreshment Rooms At 116 Stations

OTHER PROPERTY OWNED

Houses 25,136



FREIGHT TRAIN OF NEW L M S STOCK.

THE L M S CONSTITUENT COMPANIES HAVE ALWAYS CARRIED AN ENORMOUS FREIGHT TRAIN TRAFFIC.

DOCKS, HARBOURS AND WHARVES OWNED

Docks	12
Harbours	7
Wharves	12

LIVE STOCK CARRIED

(SIX MONTHS)

Horses	23,727	
Cattle	1,065,497	
Calves	170,798	
Sheep	2,038,861	
Pigs	536,227	
Miscellaneous	3,900	
								<u>3,839,010</u>



L M S LIVE STOCK TRAIN.

NEARLY EIGHT MILLION HEAD OF LIVE STOCK ARE CARRIED OVER THE L M S EVERY YEAR.

PASSENGER TRAFFIC

No. of Passengers originating on L M S (exclusive of Season Ticket Holders) (Six months)	162,385,404
Season Ticket Holders. (No. of Tickets equivalent to 12 Monthly Tickets)	306,000

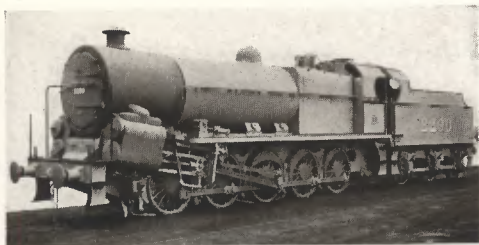
TRAIN MILEAGE, 1923

(SIX MONTHS)

Mileage run by Freight Trains	30,426,579
Mileage run by Passenger Trains	<u>41,955,613</u>
	<u>72,382,192</u>



THE LAST WORD IN COMFORTABLE RAILWAY TRAVEL.



ONE OF THE MOST POWERFUL
LOCOMOTIVES IN GREAT BRITAIN.

FREIGHT TRAFFIC ORIGINATING ON SYSTEM

(Six Months)

General Merchandise	Tons	11,216,894	
Coal, Coke, and Patent Fuel	„	40,688,188	
Other Minerals	13,944,442	
			<u>65,849,524</u>

FREIGHT TRAIN TRAFFIC CARRIED OVER L M S SYSTEM

(Six Months)

General Merchandise	Tons	16,588,948	
Coal, Coke, and Patent Fuel	„	49,686,613	
Other Minerals	„	17,259,529	
				<u>83,535,090</u>

TON MILES

Net Ton Miles of all classes of Freight Train Traffic
(six months 1923) 3,744,905,973



MANCHESTER IS WELL SERVED BY
LMS ELECTRIC TRAIN SERVICES.

PARCELS, ETC., TRAFFIC ORIGINATING ON SYSTEM

Parcels and Packages of Luggage in Advance (six months) .. 14,854,455





SMOOTH-RUNNING CARRIAGE STOCK.

ROLLING STOCK

Locomotives	10,322
Rail Motor Cars	33
Electric Locomotives	2
Passenger Carriages	18,714
Restaurant Cars	203
Sleeping Cars	86	
Post Office Vans	111	



LATEST COMFORT IN THIRD-CLASS TRAVEL—
VESTIBULE STOCK.



TRAVELLING RESTAURANT
SERVICE—PAR EXCELLENCE.

ROLLING STOCK

(continued)

Horse Boxes	1,663
Luggage, Parcel and Brake Vans	2,578
Carriage Trucks	1,714
Other Passenger Train Vehicles	1,524
Vehicles worked by Electric Power ..	582
Wagon Stock (exclusive of Service Vehicles)	304,543



A BOON TO NIGHT TRAVELLERS—
THE SLEEPING CAR.



L M S COMPLETE PARCELS SERVICE.

ROAD VEHICLES

Horse-drawn Vehicles	19,525	
Motor Vehicles	1,310	} 20,873
Miscellaneous	38	

HORSES

Horses 9,835

COAL CONSUMPTION

Coal Consumption (six months) tons 3,210,303

