

The  
**VIRTUAL MUSEUM**  
of the  
**LANCASHIRE & YORKSHIRE RAILWAY**

Infrastructure Drawings.

1846.

East Lancashire Railway.

Drawings & Plans of Works at Hardsough.

EAST LANCASHIRE RAILWAY.

CONTRACT N<sup>o</sup> 2.

WORKS AT HARDSOUGH.

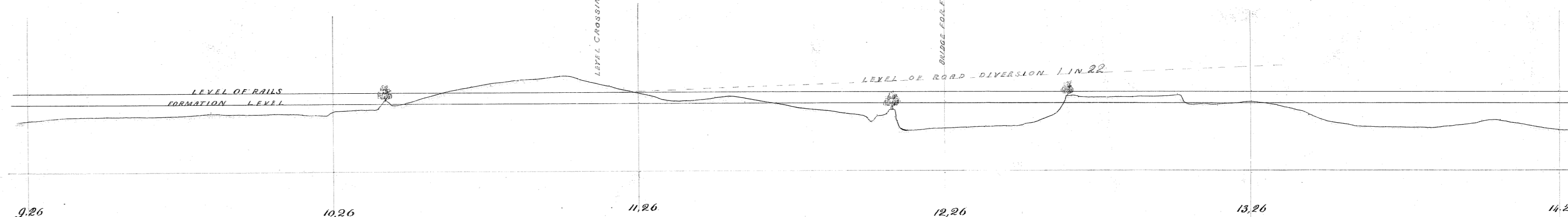
Bridge No 5. Bank Branch.

on 5  
Hardsough  
Mills  
foundations  
etc.

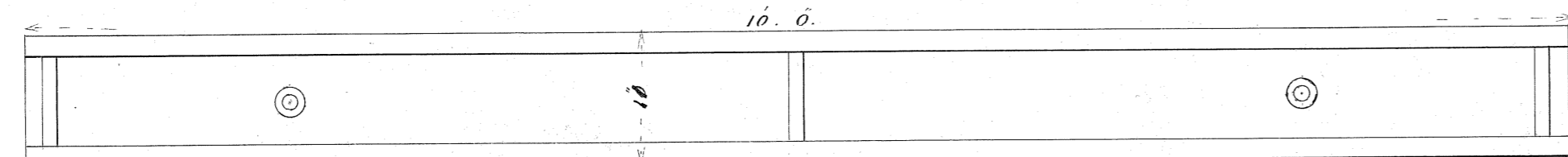
Cross Sections

At 10.26

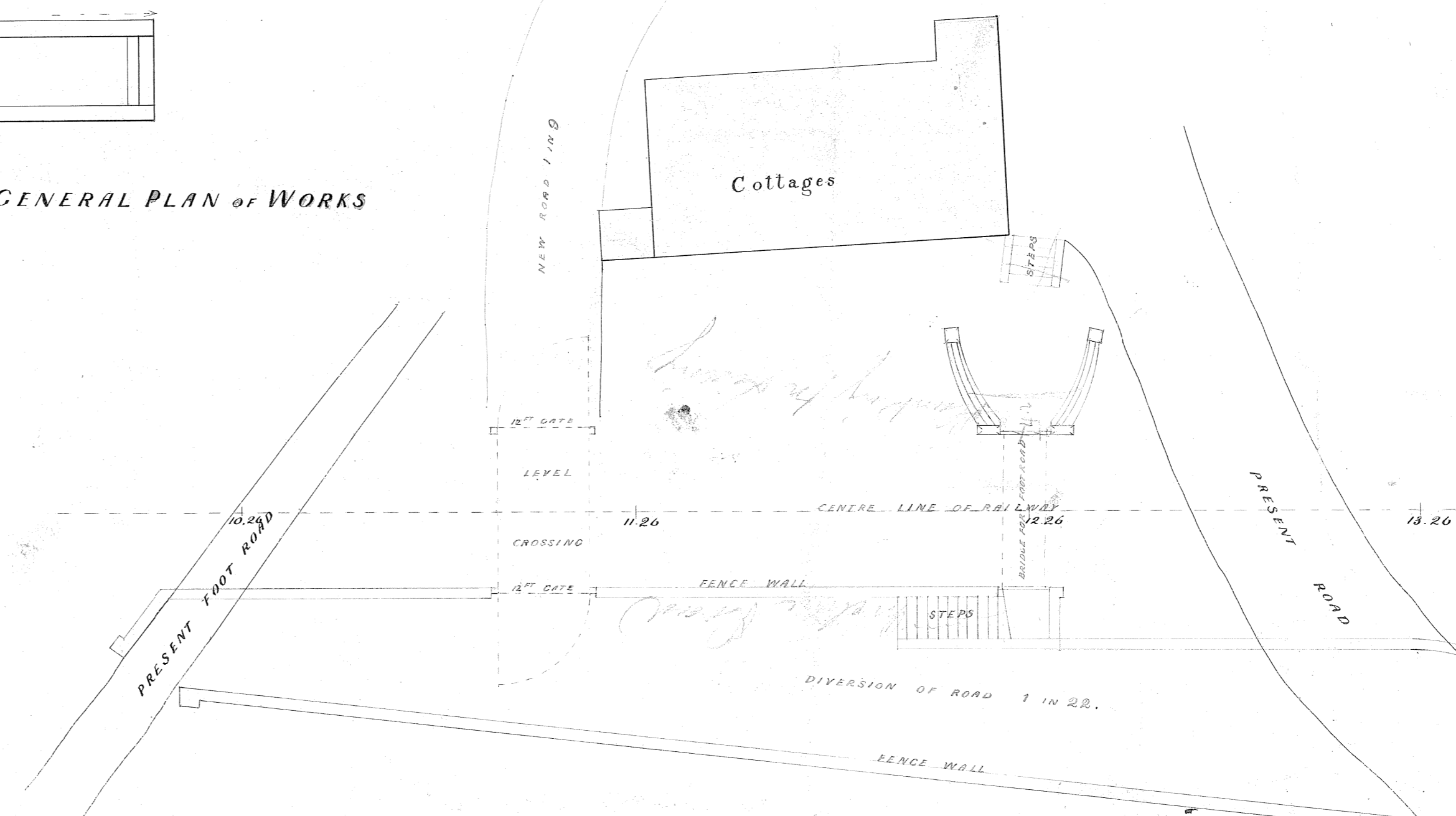
Longitudinal Section of Railway



At 11.26



GENERAL PLAN OF WORKS



Note this Bridge & crossing are to be substituted for the one at Hardsough.

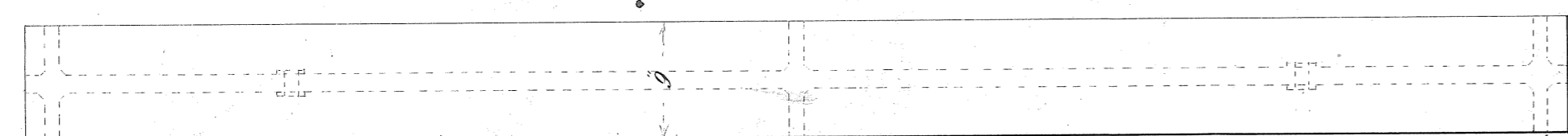
C. E. Hooley

Feb 2<sup>nd</sup> 1846

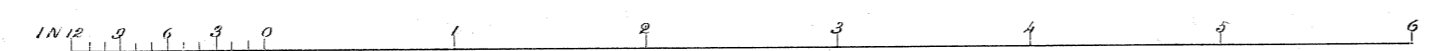
27389

Rec<sup>d</sup> February 2 1846

PLAN OF GIRDER

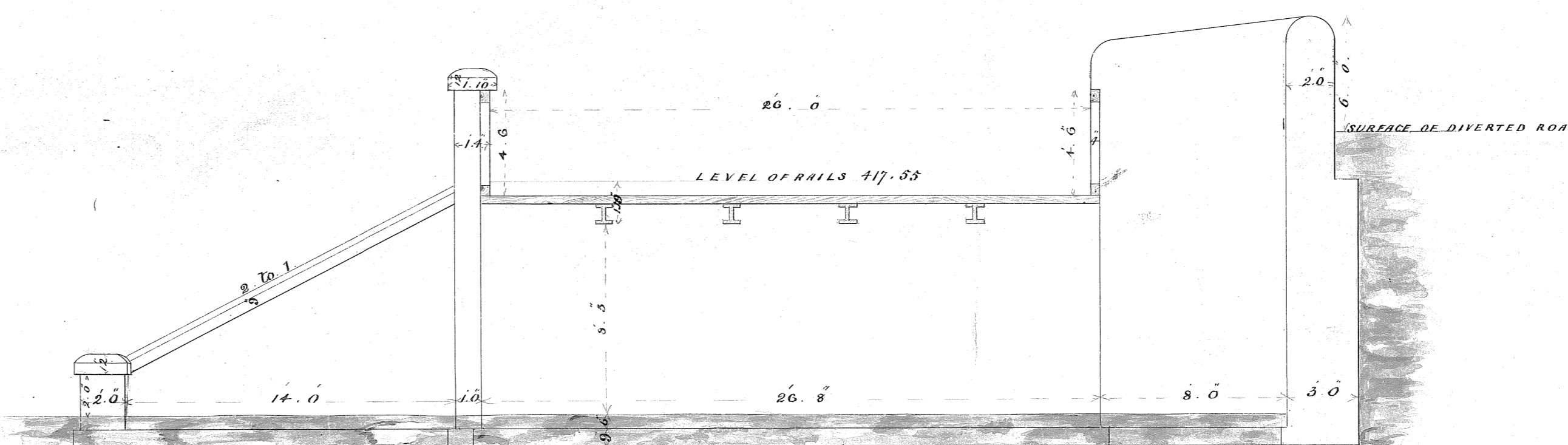


SCALE OF GIRDER DRAWINGS

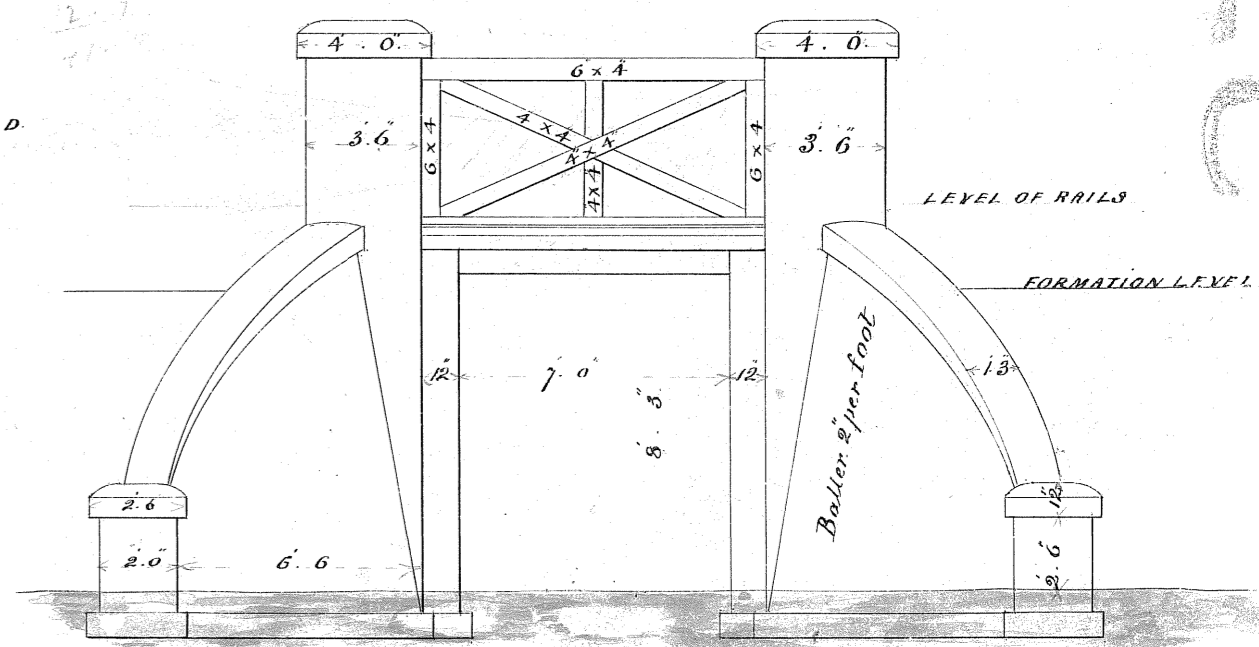


At 12.26

LONGITUDINAL SECTION OF BRIDGE

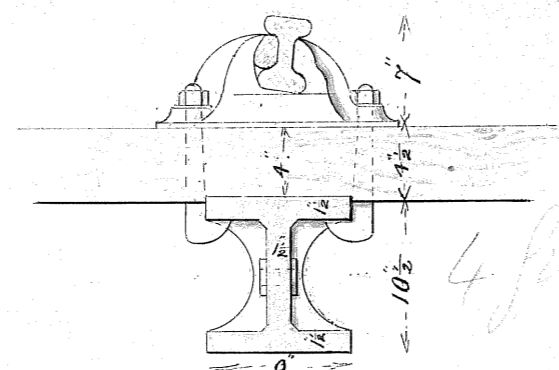


ELEVATION OF WEST END

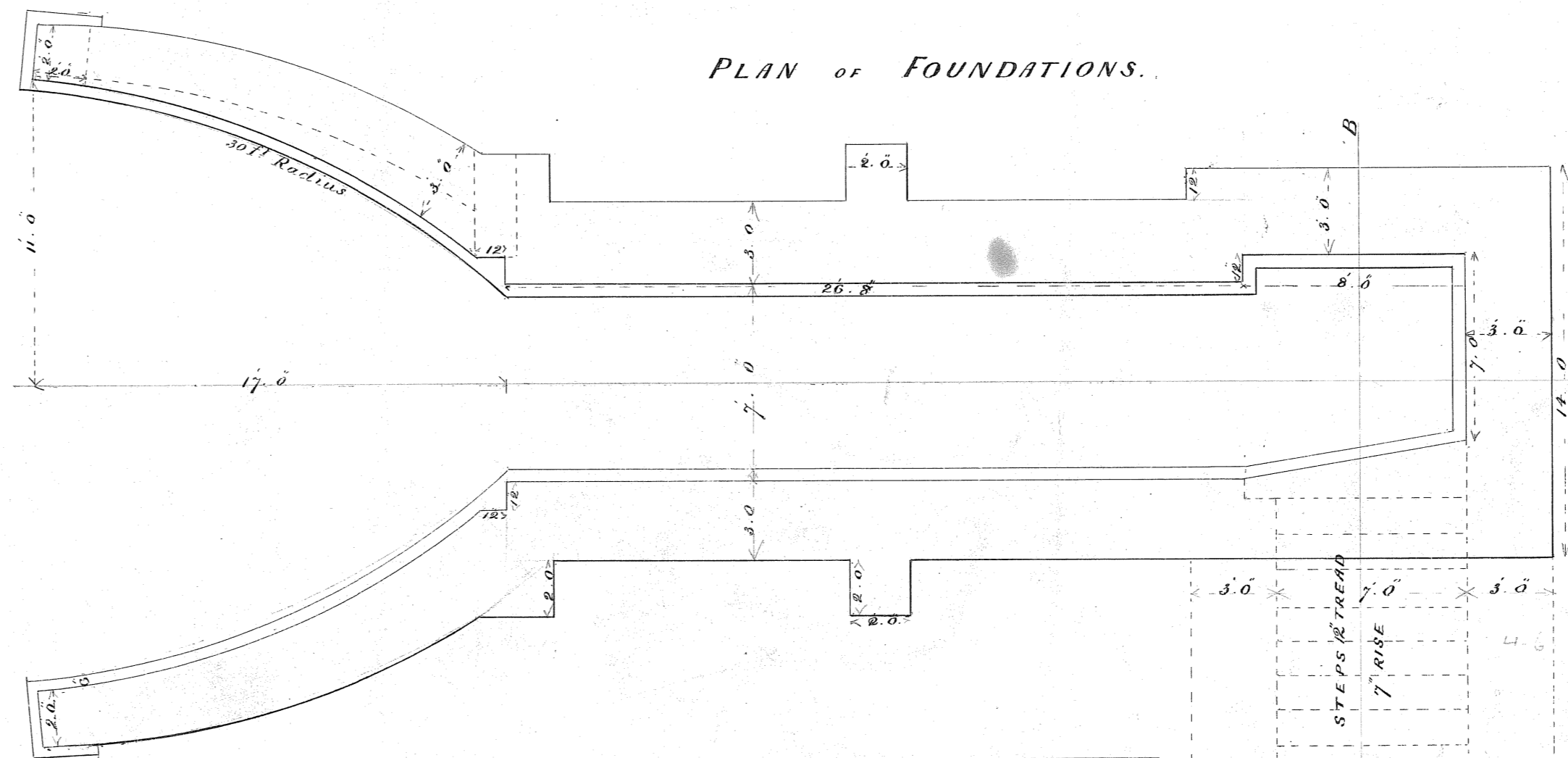


At 13.26

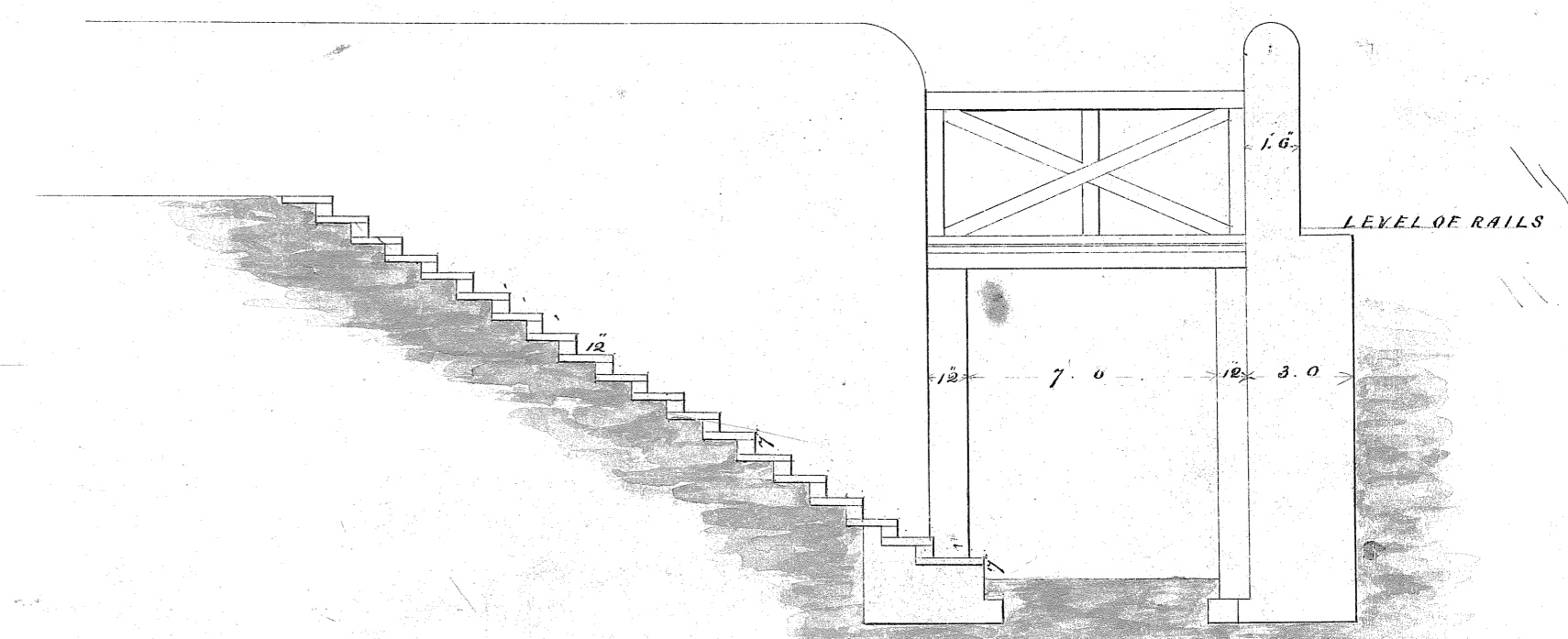
SECTION OF GIRDER



PLAN OF FOUNDATIONS



EAST END ON LINE OF SECTION AB.



SCALE OF GENERAL PLANS & SECTIONS



SCALE OF BRIDGE DRAWINGS

